



Installation Manual

JPOS Driver

Rev. 3.02

- SRP-275 / SRP-275II**
- SRP-330 / SRP-350 / SRP-350II**
- SRP-350plus / SRP-352plus**
- SRP-350plusII / SRP-352plusII**
- SRP-350III / SRP-352III**
- SRP-350plusIII / SRP-352plusIII**
- SRP-F310 / SRP-F312**
- SPP-R200 / SPP-R200II**
- SPP-R300 / SPP-R400**

■ Contents

1. Manual Information.....	3
2. Usage Environment	4
2-1 Features	4
2-2 Supported Operating Systems.....	4
2-3 Supported Interface	4
2-4 Java Environment	4
3. Installation	5
3-1 Installation.....	5
3-2 Jpos Entry Setting.....	7
3-3 Test Program	16
4. Sample Source	17
4-1 POS Printer Samples.....	17
4-2 CashDrawer Samples	17
5. Precautions	18

1. Manual Information

This manual provides information on the BIXOLON JavaPOS driver as well as on the usage POS printer products offered by BIXOLON.

The following are terms contained in this manual.

- JDK: Sun Microsystems Java Development Kit
- JRE: Sun Microsystems Java Runtime Environment
- JavaPOS: Java Point of Sale
- JCL: JavaPOS Configuration Loader

[Reference Websites]

<http://www.javapos.com> : Java POS committee website

<http://java.sun.com> : Official Java website

<http://www.bixolon.com> : BIXOLON printers website

We at BIXOLON maintain ongoing efforts to enhance and upgrade the functions and quality of all our products. In following, product specifications and/or user manual content may be changed without prior notice.

2. Usage Environment

2-1 Features

Using standard API functions, the POS System can be developed more quickly and easily, and applications can be developed independently from the operating system.

2-2 Supported Operating Systems

- Windows XP (32/64bit)
- Windows Server 2003 (32/64bit)
- Windows Vista (32/64bit)
- Windows 7 (32/64bit)
- Windows 8 (32/64bit)

2-3 Supported Interface

POSPrinter

Model	Serial	USB	Ethernet	Bluetooth	Wireless LAN
SRP-275	O	O	O	X	X
SRP-275II	O	O	O	X	X
SRP-330	O	O	O	X	X
SRP-350	O	O	O	X	X
SRP-350II	O	O	O	X	X
SRP-350III	O	O	O	X	X
SRP-350plus	O	O	O	X	X
SRP-350plusII	O	O	O	X	X
SRP-350plusIII	O	O	O	O	O
SRP-352III	O	O	O	X	X
SRP-352plus	O	O	O	X	X
SRP-352plusII	O	O	O	X	X
SRP-352plusIII	O	O	O	O	O
SRP-F310	O	O	O	X	O
SRP-F312	O	O	O	X	O
SPP-R200	O	O	X	O	X
SPP-R200II	O	O	O	O	O
SPP-R300	O	O	O	O	O
SPP-R400	O	O	O	O	O

2-4 Java Environment

- JRE (Java Runtime Environment) Version 1.5 or higher

3. Installation

The BIXOLON JavaPOS driver includes the JavaPOS Device Control, JavaPOS Device Service, JCL, manual, sample program, etc.

3-1 Installation

1) JDK & JRE Installation

a) JDK Installation

Download the 1.5 or higher version of the JDK for Windows from

<http://java.sun.com/javase/downloads/index.jsp>

b) Run "jdk-XXX-windows-i586-X.exe" and install the JDK.

*** The JRE is installed automatically during JDK installation and thus no separate JRE installation is required.**

c) Select Start -> Settings -> Control Panel -> System.

*** System may not appear if using Windows XP. In such cases, click "Switch to Classic View" at the top left of the Control Panel, and the System icon should appear.**

d) In the Advanced tab, click the "Environment Variables" button.

e) Add the following content in the path value of both the user environment variables and the system environment variables.

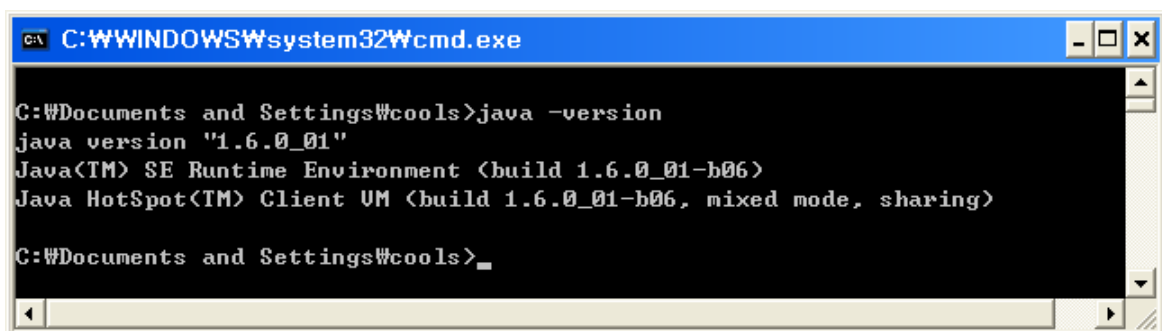
To Be Added: <JDK installed folder>\bin

Ex.) C:\Program Files\Java\jdk1.6.0_01\bin

f) Select Start -> Programs -> Accessories -> Command Prompt.

g) Enter "java -version" in the command prompt window.

h) If the following appears, installation has been completed successfully.



```
C:\WINDOWS\system32\cmd.exe

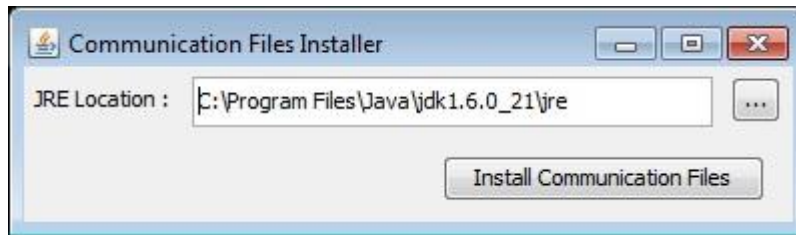
C:\Documents and Settings\cools>java -version
java version "1.6.0_01"
Java(TM) SE Runtime Environment (build 1.6.0_01-b06)
Java HotSpot(TM) Client VM (build 1.6.0_01-b06, mixed mode, sharing)

C:\Documents and Settings\cools>
```

2) Java Communication API Installation

a) Double click “CommInstaller.exe”.

b) Check JRE(Java Runtime Environment) location.

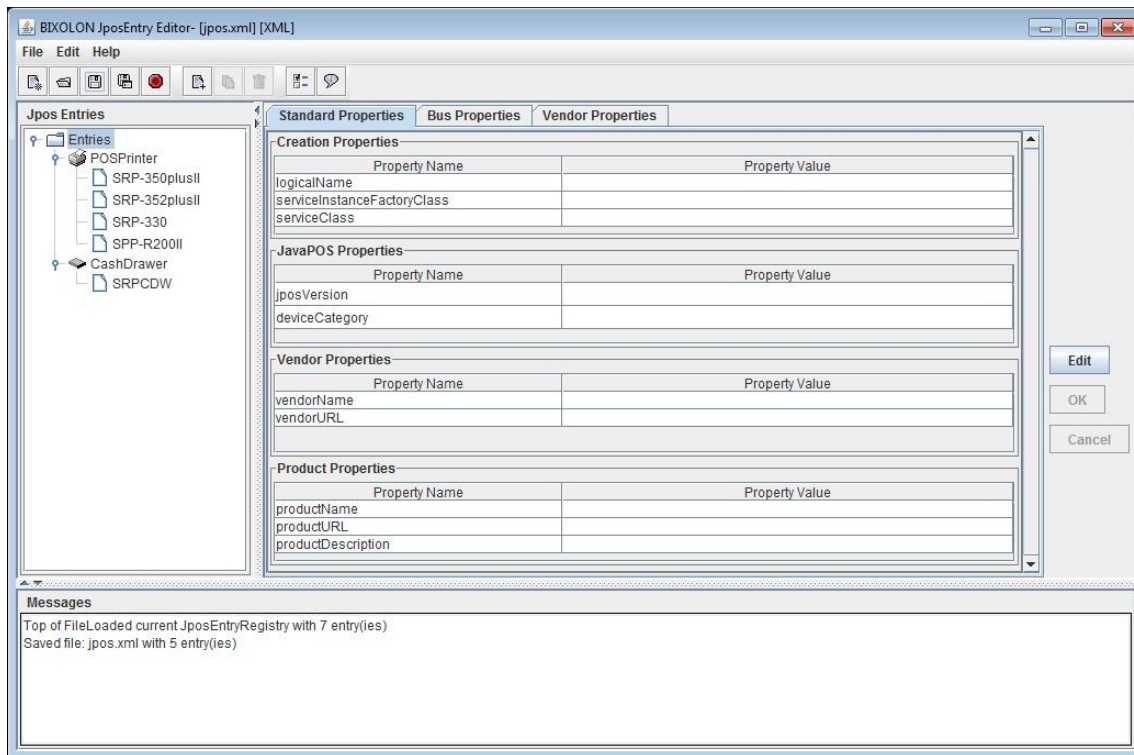


*** If “JRE Location” is wrong, you should change it to your location.**


c) Click “install Communication Files” button

3-2 Jpos Entry Setting


Double click “Run JCL Loader.Bat”. The JposEntry Editor begins.



1) Creating a New File

Click the  icon, or select “New” from the “File” menu.

2) Adding a POS Printer

- a) Click the  icon, or select “Add” from the “Edit” menu.
- b) Select “POSPrinter” in “Device Category”.

c) After selecting the printer to be added in “POS Device”, enter the “Logical name”.

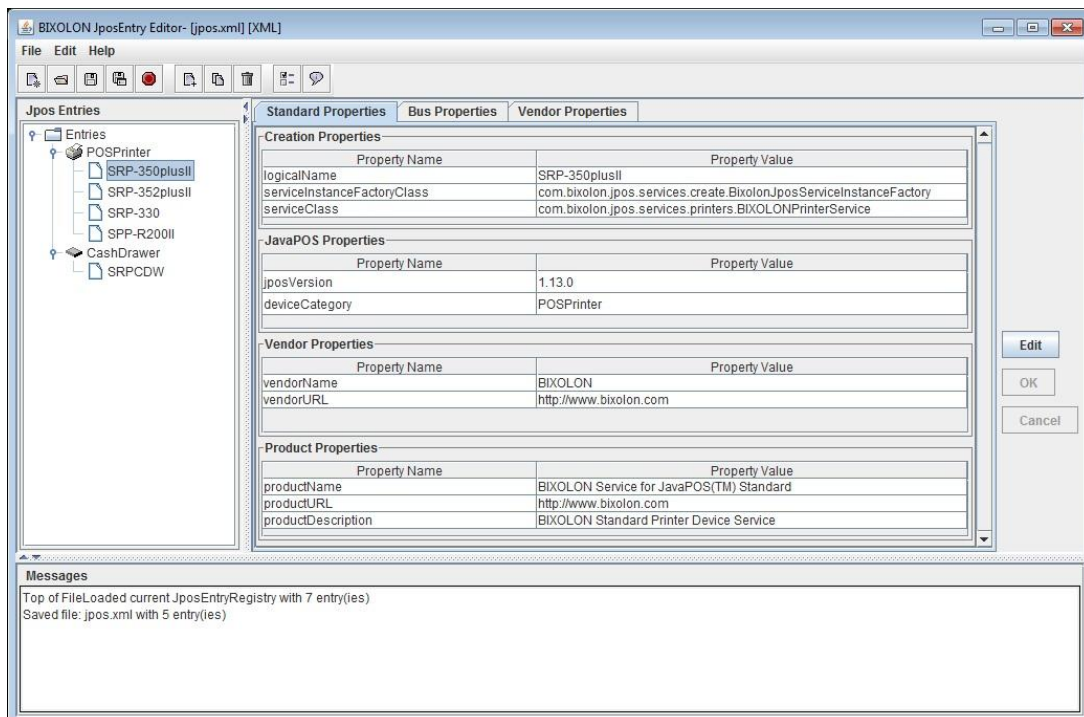


The dialog box titled "Add POS Device Entry for BIXOLON" contains the following fields and controls:

- Logical name:** A text field containing "SRP-350plusII".
- Registry populator:** A dropdown menu showing "JCL XML Entries Populator".
- Device Category:** A dropdown menu showing "POSPrinter".
- POS Device:** A dropdown menu showing "SRP-350PLUSII".
- Line Width:** A dropdown menu showing "576 dots".
- Buttons:** "OK" and "Cancel" buttons at the bottom.

* The default value can be used without problem as the Logical name.

d) “Click the “OK” button and click Printer.model.



The BIXOLON JposEntry Editor window shows the configuration for a printer entry. The left pane displays a tree of entries under "POSPrinter", with "SRP-350plusII" selected. The right pane shows the properties for this entry, organized into four sections:

Property Name	Property Value
logicalName	SRP-350plusII
serviceInstanceFactoryClass	com.bixolon.jpos.services.create.BixolonJposServiceInstanceFactory
serviceClass	com.bixolon.jpos.services.printers.BIXOLONPrinterService

Property Name	Property Value
jposVersion	1.13.0
deviceCategory	POSPrinter

Property Name	Property Value
vendorName	BIXOLON
vendorURL	http://www.bixolon.com


Property Name	Property Value
productName	BIXOLON Service for JavaPOS(TM) Standard
productURL	http://www.bixolon.com
productDescription	BIXOLON Standard Printer Device Service


Buttons: Edit, OK, Cancel.

Messages

Top of FileLoaded current JposEntryRegistry with 7 entry(ies)
Saved file: jpos.xml with 5 entry(ies)

3) Adding a CashDrawer

- Click the  icon, or select “Add” from the “Edit” menu.
- Select “CashDrawer” in “Device Category”.
- Select the printer to be linked to the CashDrawer in “Linked POS Device”.

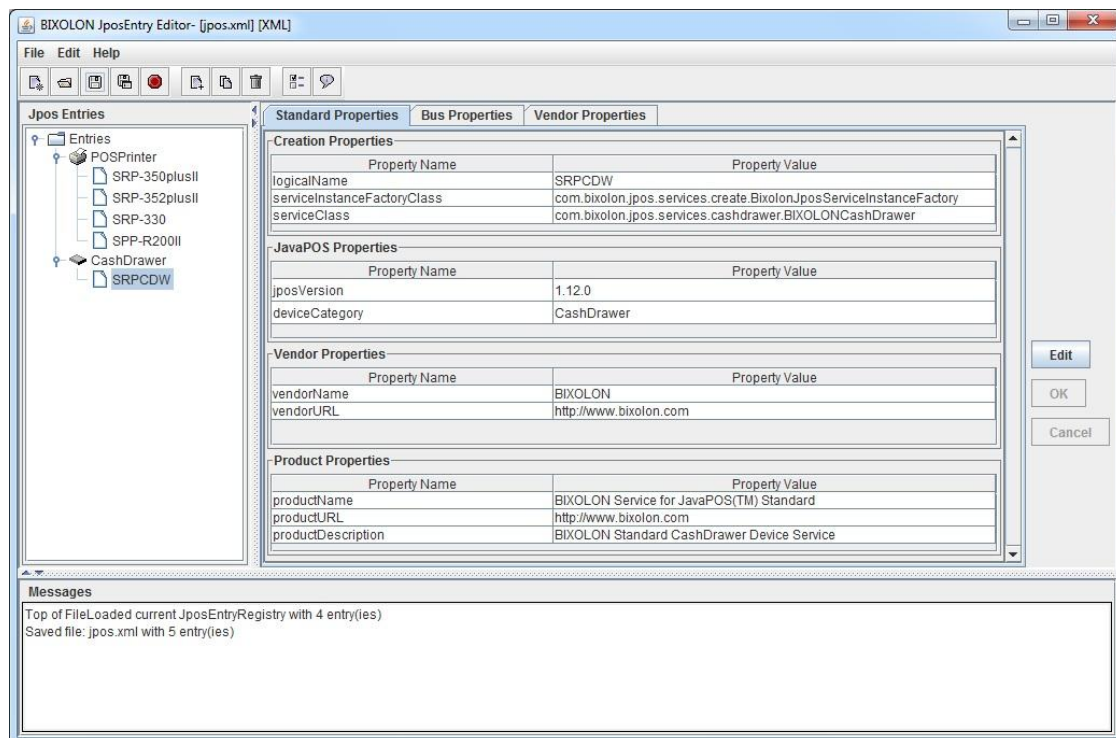


The dialog box titled "Add POS Device Entry for BIXOLON" contains the following fields and controls:

- Logical name:** SRPCDW
- Registry populator:** JCL XML Entries Populator (dropdown)
- Device Category:** CashDrawer (dropdown)
- Linked POS Device:** SRP-350PLUSII (dropdown)
- Line Width:** 576 dots (dropdown)
- Buttons:** OK, Cancel

*** When using a USB port, communication is not possible if the “Linked POS Device” has not been properly selected.**

- Click the “OK” button and click CashDrawer model.



The BIXOLON JposEntry Editor window shows the configuration for the SRPCDW device. The left pane displays a tree of Jpos Entries, including POSPrinter, SRP-350plusII, SRP-352plusII, SRP-330, SPP-R200II, CashDrawer, and SRPCDW. The right pane shows the properties for the selected device, categorized into Creation, JavaPOS, Vendor, and Product Properties.

Property Name	Property Value
logicalName	SRPCDW
serviceInstanceFactoryClass	com.bixolon.jpos.services.create.BixolonJposServiceInstanceFactory
serviceClass	com.bixolon.jpos.services.cashdrawer.BIXOLONCashDrawer

Property Name	Property Value
jposVersion	1.12.0
deviceCategory	CashDrawer

Property Name	Property Value
vendorName	BIXOLON
vendorURL	http://www.bixolon.com

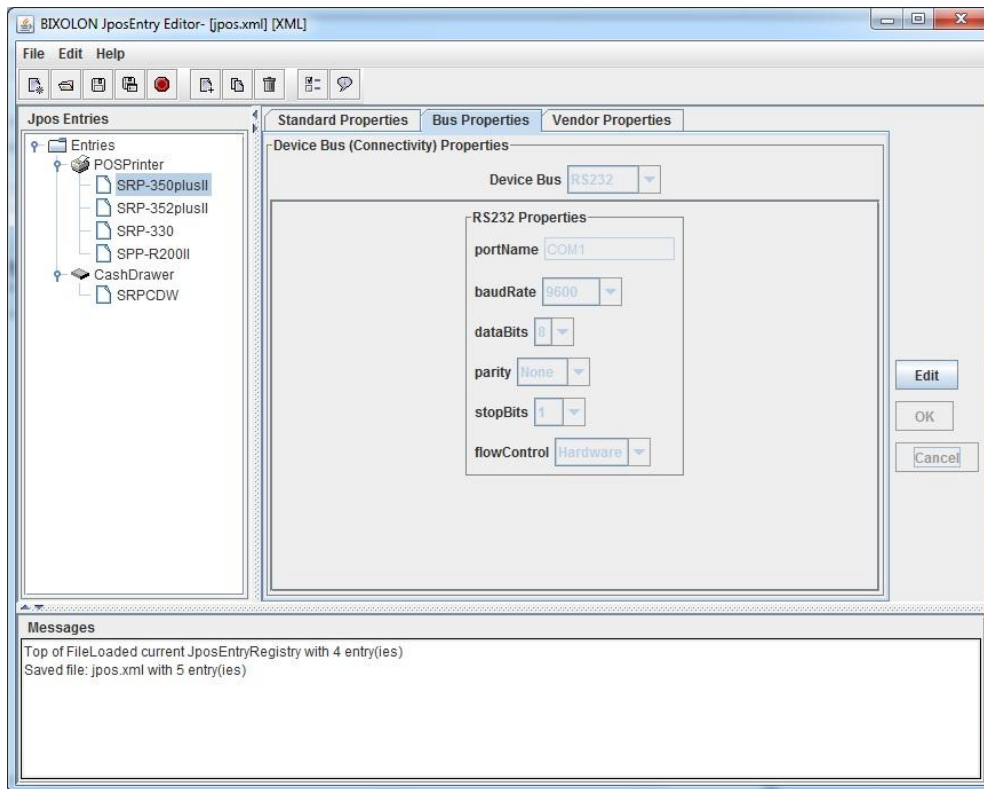
Property Name	Property Value
productName	BIXOLON Service for JavaPOS(TM) Standard
productURL	http://www.bixolon.com
productDescription	BIXOLON Standard CashDrawer Device Service

Messages

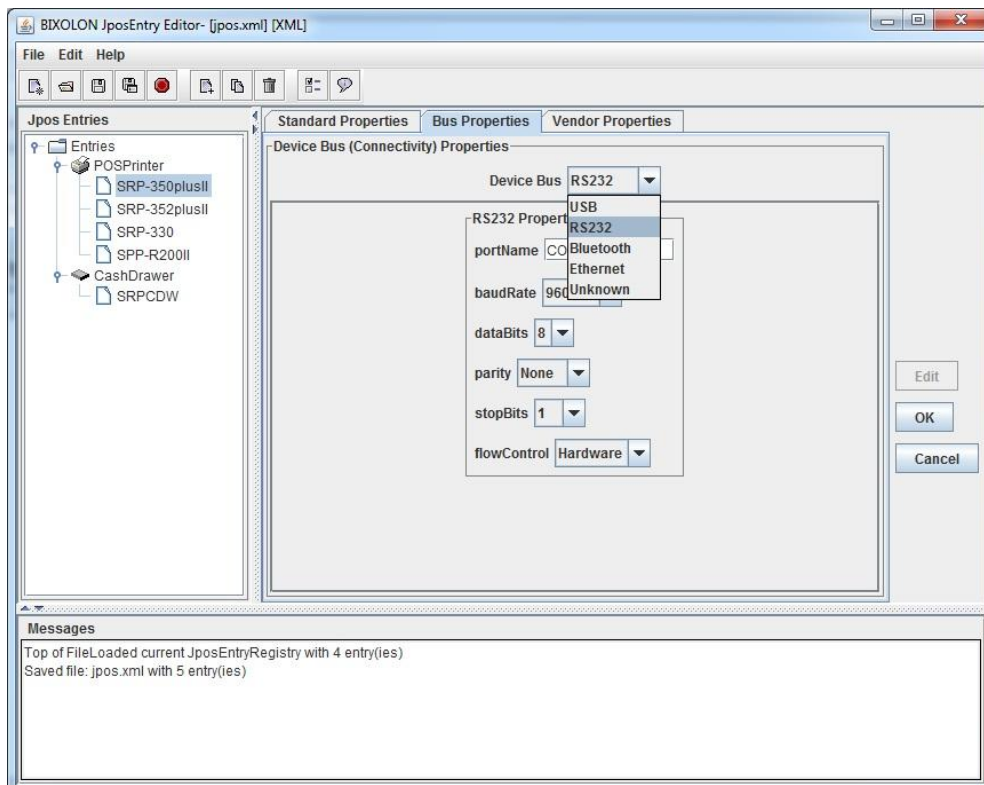
Top of FileLoaded current JposEntryRegistry with 4 entry(ies)
Saved file: jpos.xml with 5 entry(ies)

4) POS Printer Communication Setting

a) After selecting Printer Model, select the “Bus Properties” tab.

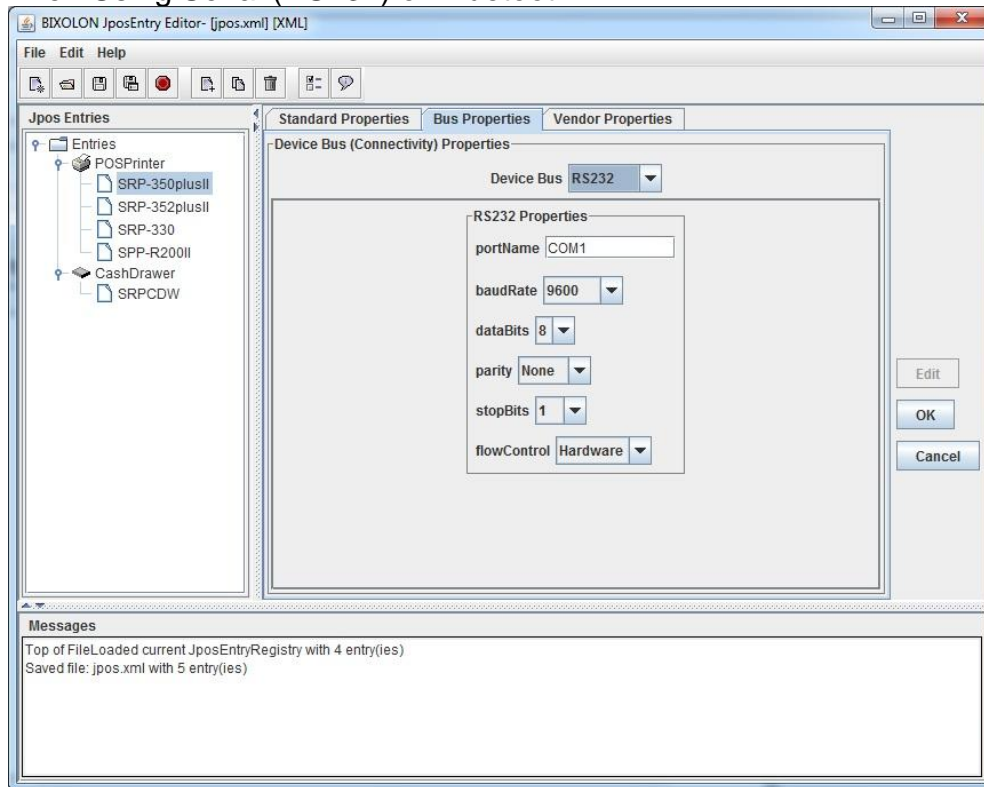


b) After clicking the “Edit” button, select the communication port to be used in “Device Bus”.

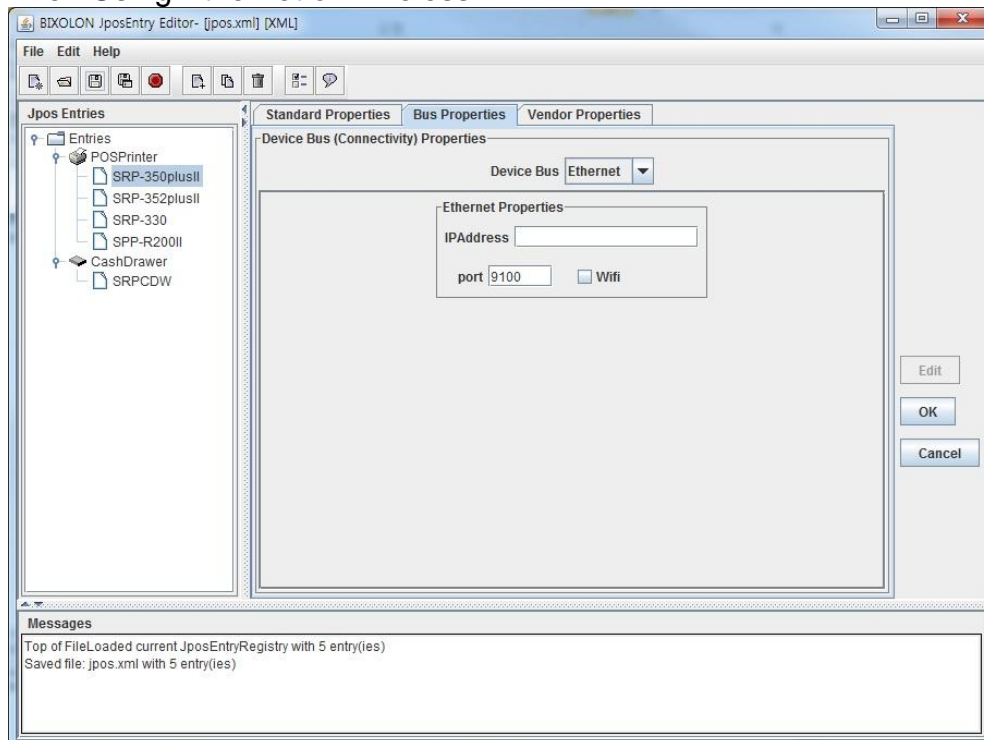


- When using the USB port, no special settings are required.

- When Using Serial (RS232) or Bluetooth



- When Using Ethernet or Wireless LAN



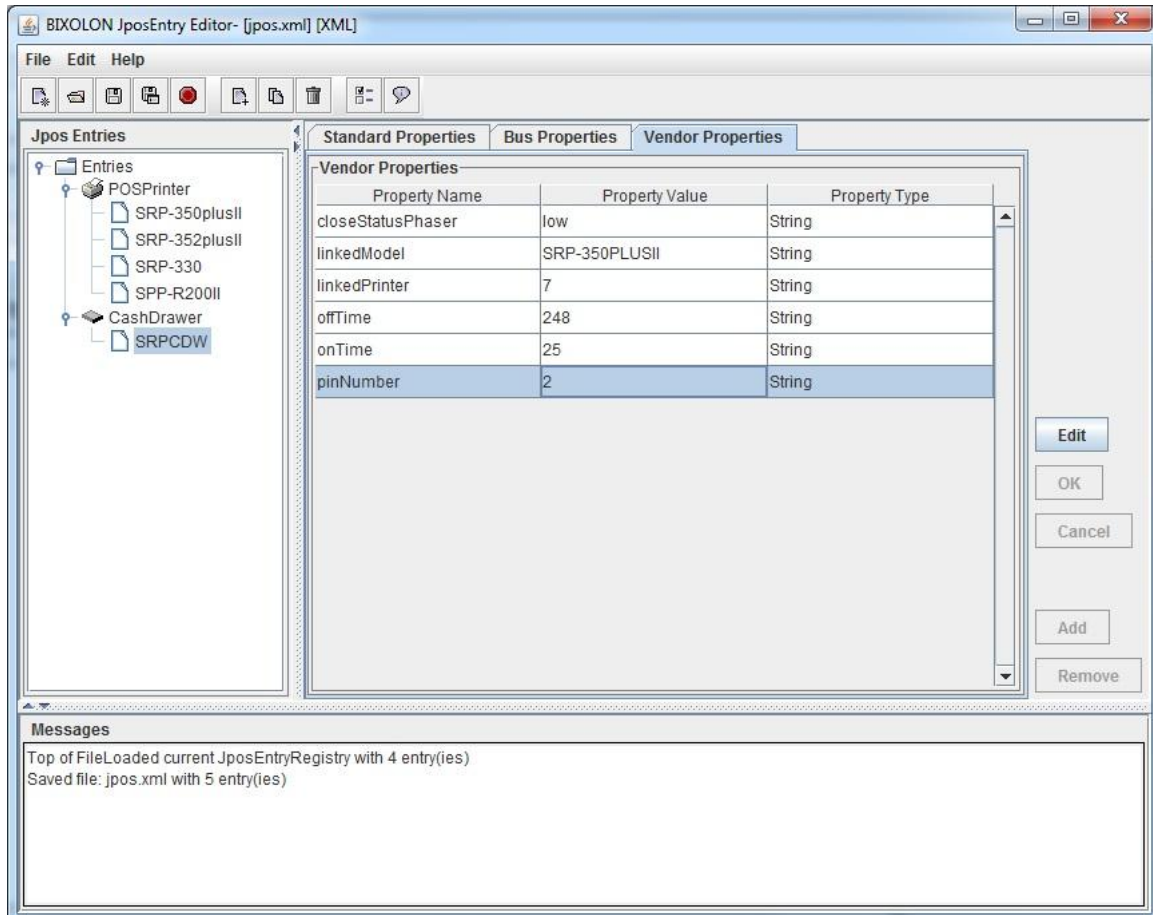
*** Each item of the Properties must be identical to the current print settings.**

c) Click the “OK” button to complete the setting process.

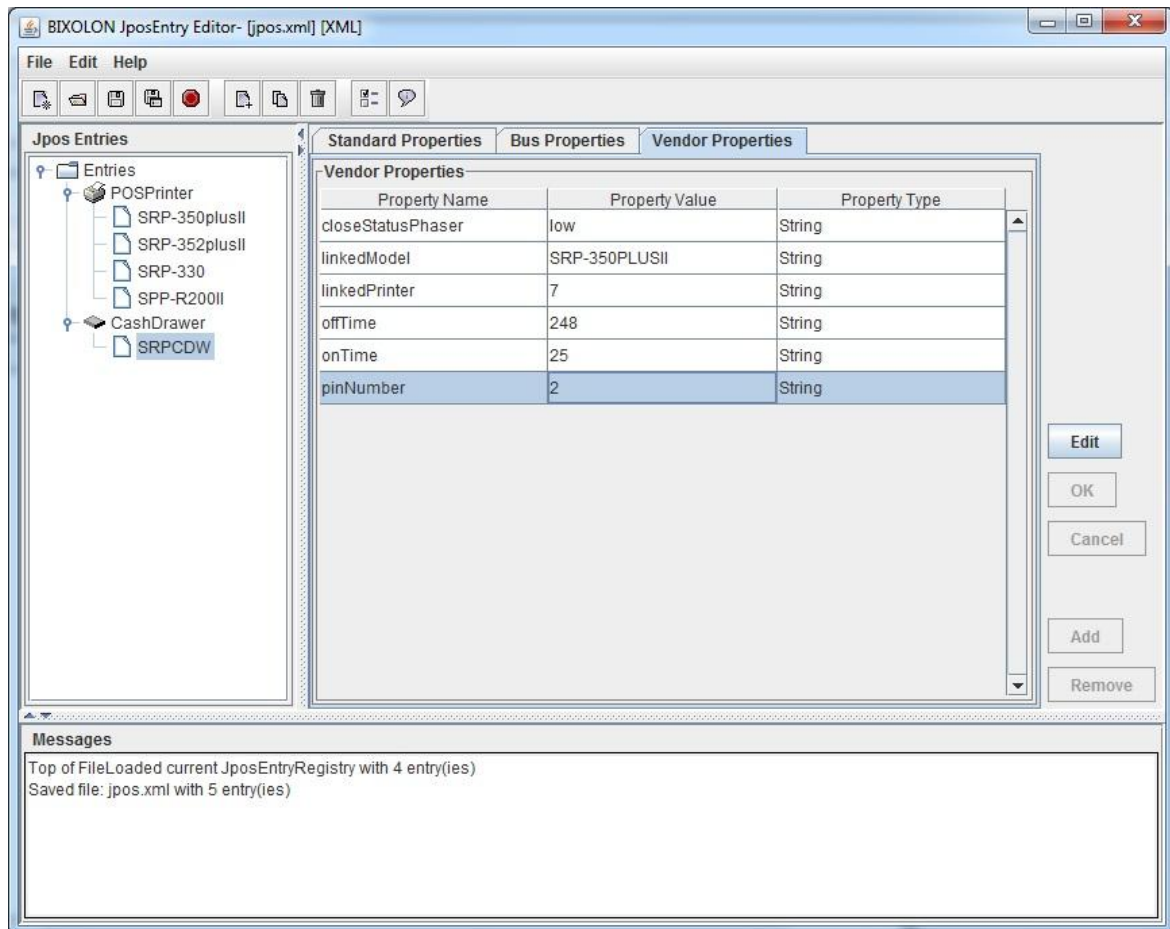
*** With regard to the CashDrawer, communication settings must be identical with the connected printer. The setting instructions are the same as those for the printer.**

5) CashDrawer PIN Number and linkedPrinter Setting

a) After selecting CashDrawer, select the “Vendor Properties” tab.

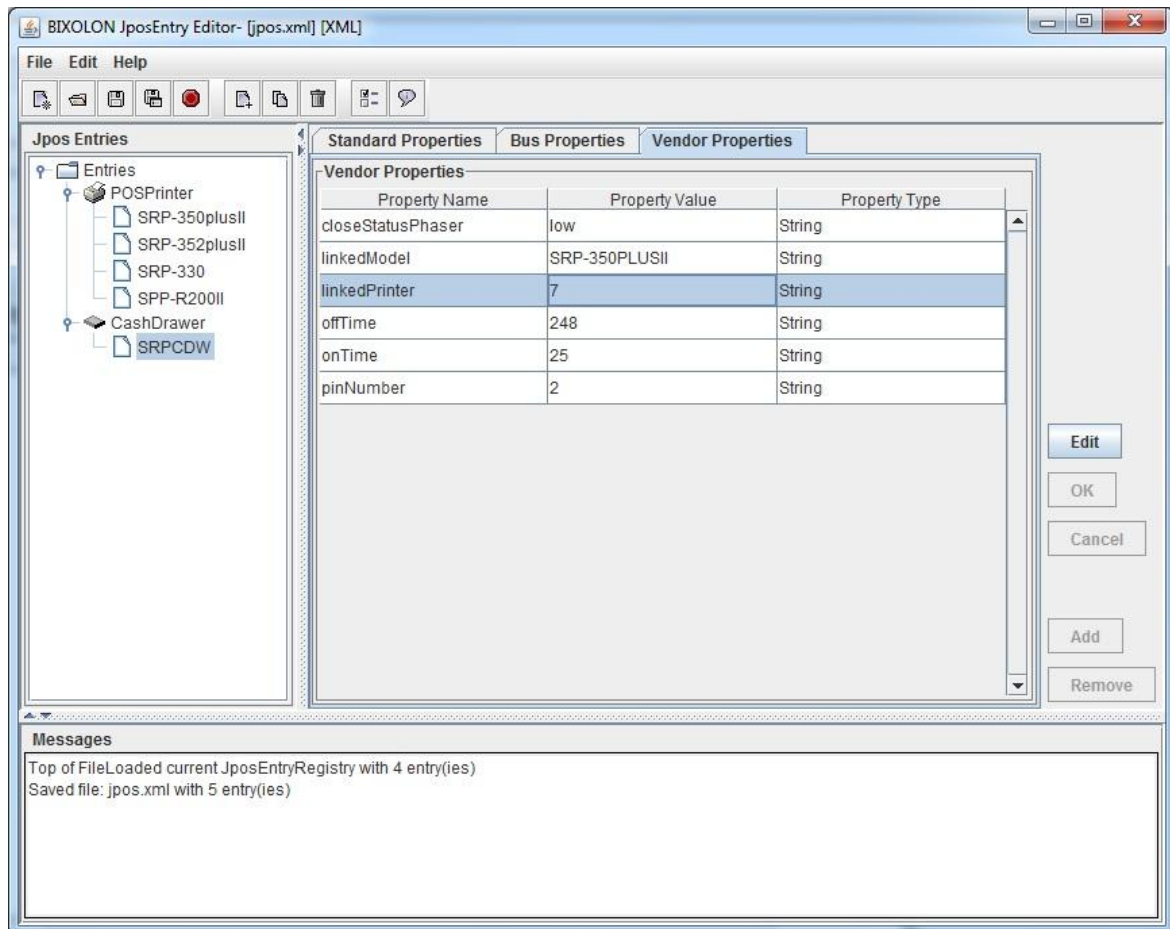


b) Set closeStatusPhaser and pinNumber to correspond with the CashDrawer in use.



- closeStatusPhaser: Signal value of CashDrawer when closed (low or high)
- pinNumber: PIN number used to open the CashDrawer (2 or 5)

c) Set linkedModel and linkedPrinter to link the CashDrawer.




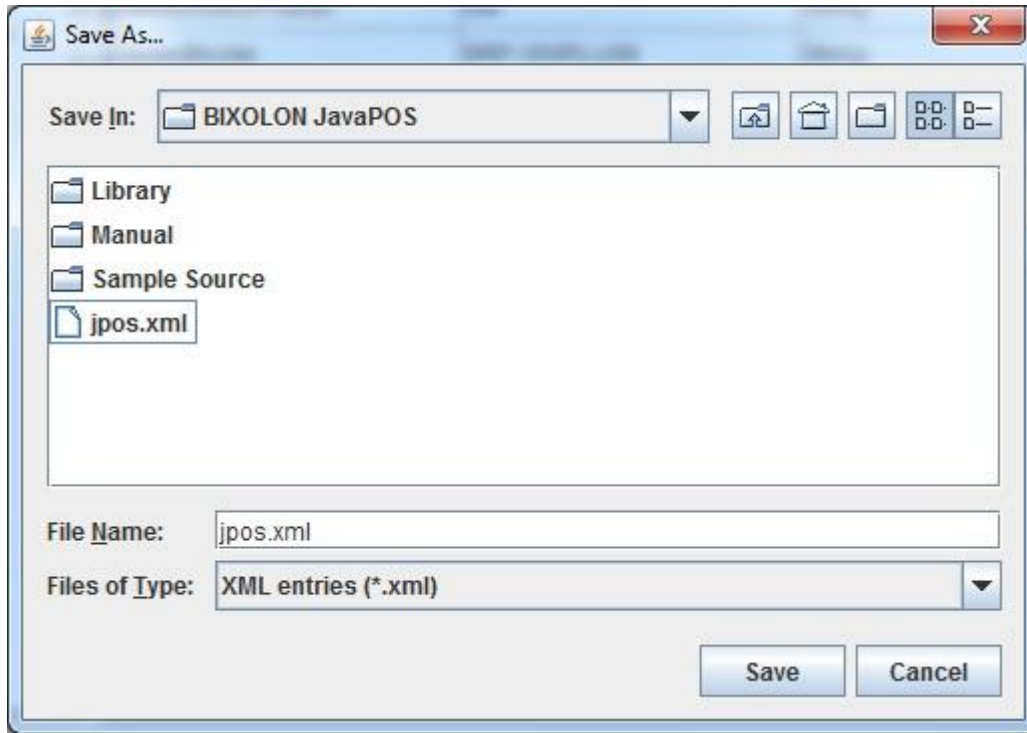
* To change the Linked POS Device, the value of "linkedPrinter" under "Vendor Properties" can be modified.

- SRP-350plusII: 0x7
- SRP-352plusII: 0x8

d) Click the "OK" button to complete the setting process.

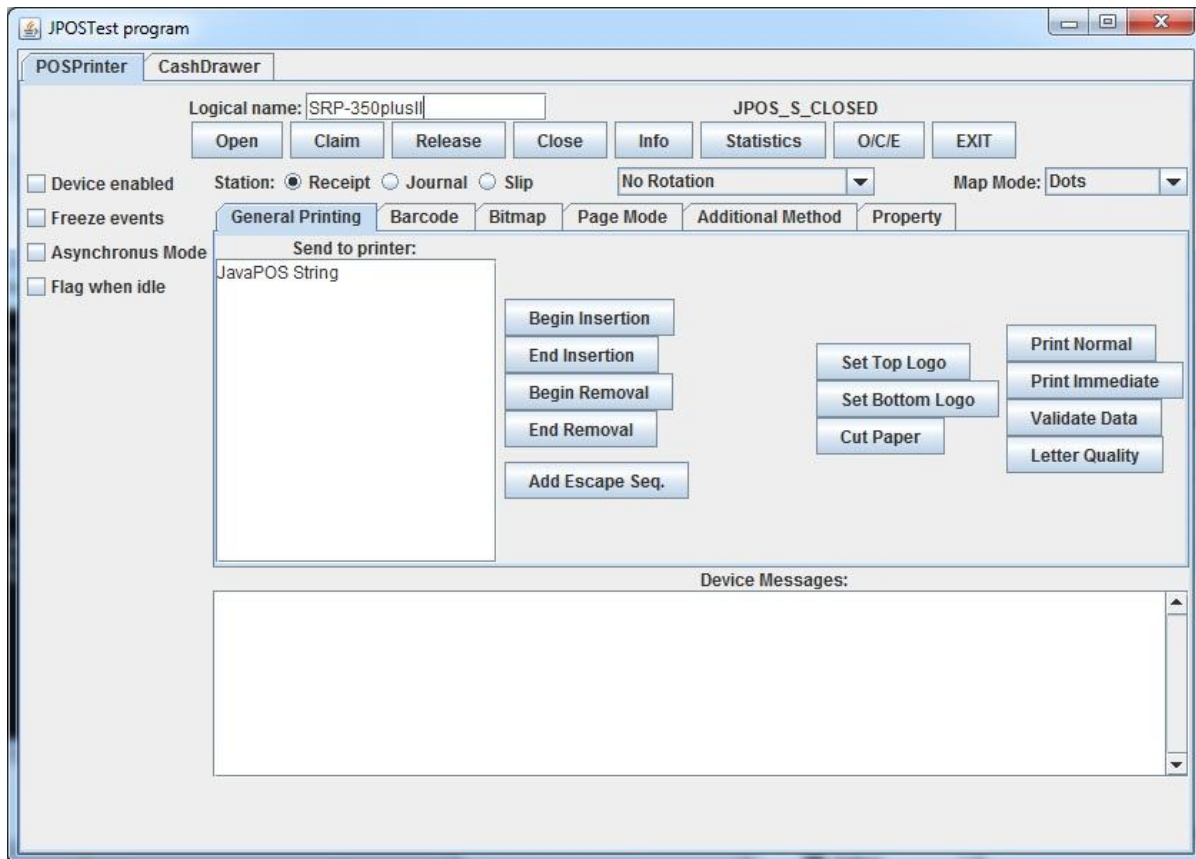
6) JposEntry Saving

- a) Click the  button, or select “Save” from the “File” menu.
- b) Make sure to set the file name to “jpos.xml” and click the “Save” button.



3-3 Test Program

Double click “TestProgram_Loader.Bat”. The JavaPOS test program begins.



- 1) Logical Name: type the logical name saved by Jpos Entry Editor.
- 2) Click “Open” button to open JavaPOS device service.
- 3) Click “Claim” button to check the status of device.
- 4) Check “Device enabled” check box.
- 5) You can test each function with each button.

4. Sample Source

The content of the “Sample Source” folder is as follows.

- sampleimage.bmp: sample image
- *.java: java source file

4-1 POS Printer Samples

- | | |
|-------------------------------|--|
| 1) PrintNormalSample. java | PrintNormal function sample source |
| 2) PrintBitmapSample. java | PrintBitmap function sample source |
| 3) PrintBarcodeSample. java | PrintBarcode function sample source |
| 4) CutPaperSample. java | CutPaper function sample source |
| 5) ESCSequenceSample. java | ESC Sequence sample source |
| 6) CheckHealthSample. java | CheckHealth function sample source |
| 7) POSPrinterEventSampe. java | POSPrinter-related event sample source |

4-2 CashDrawer Samples

- | | |
|---------------------------------|--|
| 1) OpenCashdrawerSample. java | Opendrawer function sample source |
| 2) CashdrawerEventsSample. java | Cashdrawer-related event sample source |

5. Precautions

- The BIXOLON JavaPOS software package that is installed supports devices offered by BIXOLON. Normal operation is not guaranteed when used with other devices.
- Errors in operation may occur if installed with another JavaPOS Driver.
- ※ If an unknown issue occurs, either contact the dealer or submit an inquiry at the website below for fast response.

www.bixolon.com